



HFE/SFC

25/50

Wall or ceiling mounted industrial air cleaner with electrostatic filter, activated carbon filter and integrated extraction fan. *D*
 Depending on the specific application, pre and after filters must be selected and ordered separately. The HFE/SFC-25/50 is suitable for filtering airborne particles and volatile organic components.

APPLICATIONS

The HFE/SFC-25/50 **is intended** to be used for the following applications:

- airborne dust particles
- gasses



Do **not** use the HFE/SFC-25/50 for the following applications or in the following circumstances:

- arc-air gouging
- aluminium laser cutting
- extraction of aggressive fumes and gases (e.g. from acids, from alkaline, from soldering paste containing lithium)
- extraction of hot gases (more than 45°C/113°F continuously)
- grinding aluminum and magnesium
- medium and heavy welding applications
- flame spraying
- spark machining
- sucking cigarettes, cigars, oiled tissues and other burning particles, objects and acids
- extraction of cement, sawdust, wood dust etc.
- explosive environments or explosive substances/gases



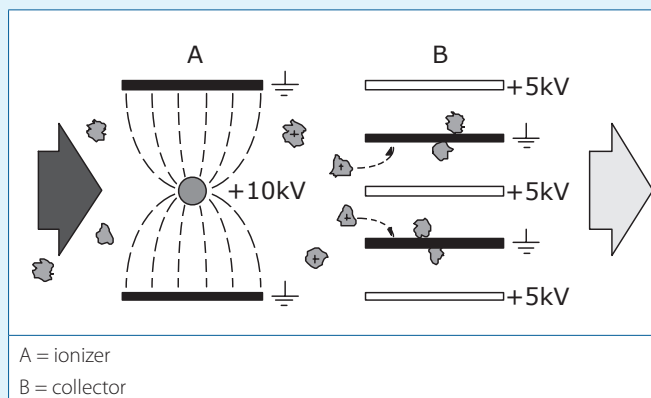
SPECIFICATIONS

	HFE/SFC-25	HFE/SFC-50
Physical dimensions and properties		
Height	630 mm	630 mm
Width	1650 mm	1650 mm
Depth	560 mm	1010 mm
Weight (net)	165 kg	285 kg
Material housing	epoxy coated steel	
Colour	grey RAL 7035	

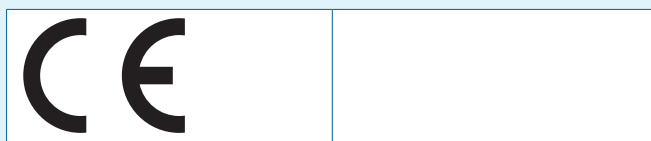
	HFE/SFC-25	HFE/SFC-50
Filters		
Filter package HFE: <ul style="list-style-type: none">FIS (ionizer)FCS (collector)	1 1	2 2
Filter package SFC: <ul style="list-style-type: none">SAF (pre-filter)Cannisters	1 8	2 16
Material SFC: <ul style="list-style-type: none">odour filter	activated carbon	
Max. filtration capacity	1600 m³/h	3200 m³/h
Pre- and final filter	select and order separately	
Electrical data		
Supply voltage	230V/1~/50Hz	
Power consumption: <ul style="list-style-type: none">motorfilter package	700 W 35 W	1400 W 40 W
Thermal protection	yes, integrated with fan	
Control voltage	24 VAC	
Control fuse	2.0 AT	
Voltage: <ul style="list-style-type: none">ionizercollector	+10 kV +5 kV	

	HFE/SFC-25	HFE/SFC-50
Ambient conditions		
Operating temperature: <ul style="list-style-type: none">• minimum• nominal• maximum	5°C 20°C 45°C	
Max. relative humidity	80%	
Outdoor use allowed	no	
Storage conditions	<ul style="list-style-type: none">• 5 - 45°C• relative humidity max. 80%	
Product combinations (choice required)		
Prefilters: <ul style="list-style-type: none">• SAF• SOD	<ul style="list-style-type: none">• aluminium filter• demister for light oilmist application	
Final filters: <ul style="list-style-type: none">• SAF• SSF	<ul style="list-style-type: none">• aluminium filter (standard)• progressive synthetic filter (filter class G3)	
Options		
Oil disposal device	oil drainer	
Remote control with timer	RC-CME RC-CME/T	
Scope of supply		
<ul style="list-style-type: none">- Air cleaner (incl. ionizer + collector, odour filter, excl. other pre and final filters)- Electrical diagram- Manual- Square key 6 mm- Mounting material (4x eye bolt - 4x sliding nut - 4x lock ring)		
Harmonized Tariff Code	8421.39.2090	
Country of origin	Netherlands	
Order information		
Article number		
HFE-SFC, Airflow left-right	1040438220	1040438222
HFE-SFC, Airflow right-left	1040438221	1040438223

ELECTROSTATIC FILTER PRINCIPLE

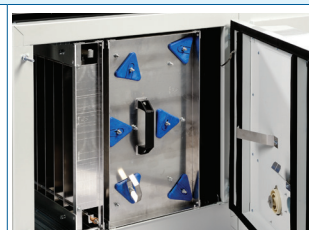


APPROVALS/CERTIFICATES



FEATURES

Constant extraction level
due to open filter structure HFE



High voltage indicator light



Easy access to electro part HFE



Product type	HFE/SFC-25/50
Product category	Spatial filtration systems
Version	21012019/A